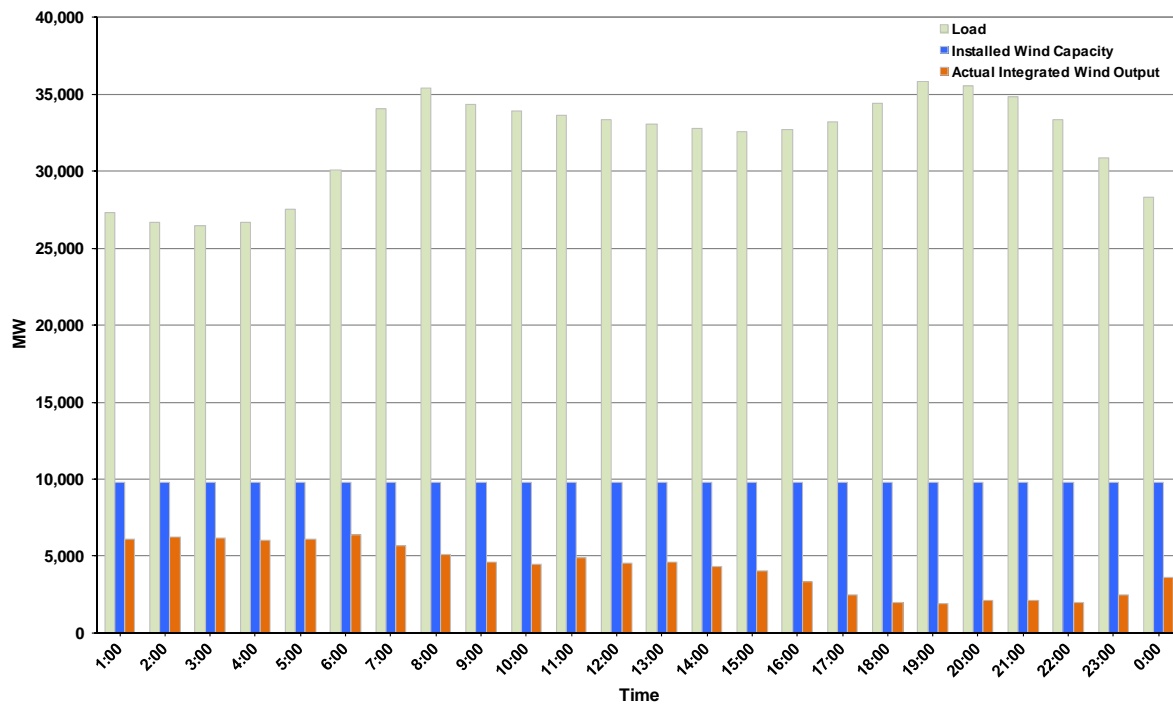




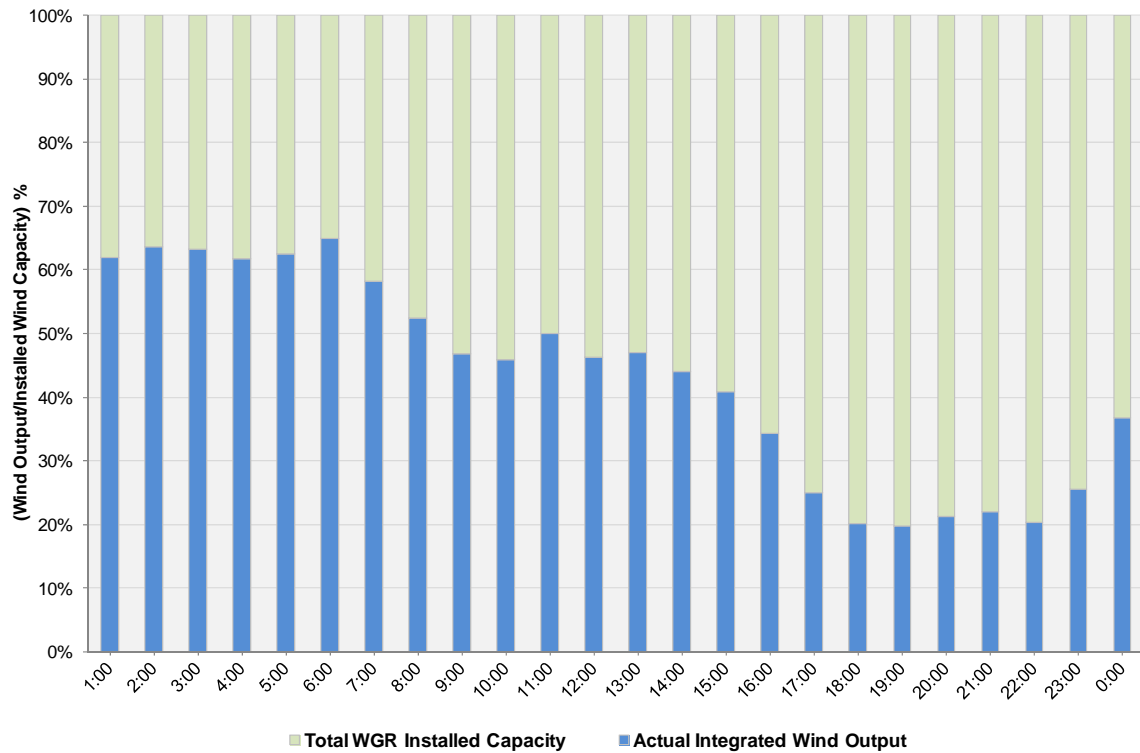
ERCOT Grid Operations Wind Integration Report: 01/24/12

Peak Load	35,789 MW
Load Peak Hour (HE)	19
Wind over Peak	1,936 MW
Wind Record 10/07/11	7,400 MW
Max Wind Value	6,479 MW
Wind Peak Time	05:57
Wind Integration %	20.51%

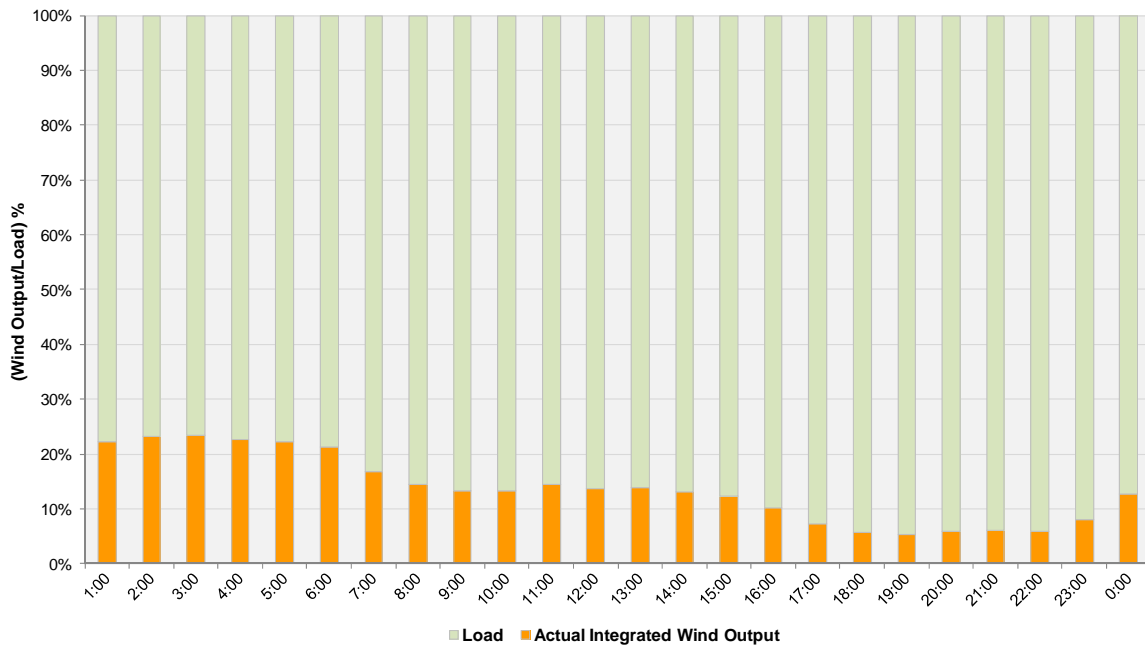
Hourly Average Actual Load vs. Actual Wind Output
01-24-2012



Actual Wind Output as a Percentage of the Total Installed Wind Capacity
01-24-2012



Actual Wind Output as a Percentage of the ERCOT Load
01-24-2012



ERCOT Load vs. Actual Wind Output 1/17/2012 - 1/24/2012

